

# ROTARY TYPE BIN/CRATES CLEANING MACHINE



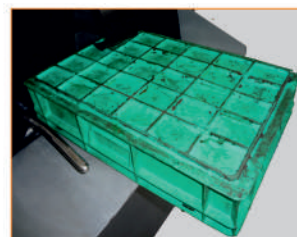
## **BASIC FEATURES OF THE MACHINE :**

- All Wetted parts are constructed using Stainless Steel (SS 304)
- Batch Type Process (150 No's / 8 Hrs Shift)
- High Pressure wash pump with 3D Nozzle arrangement
- Oil skimmer
- Recycling Filtration systems
- Gas Springs for Handling the Doors
- Operator panel with PLC Control & HMI Display
- Electrical Immersion Heating for optimizing the Wash Tank temperature
- Tank Insulation
- Max size : 600 x 400 x 300 mm (LxWxH)

## **OPTIONAL ACCESSORIES :**

- Auto Door opening & closing system through Pneumatic systems
- Oil Separator Attachment
- Steam Extraction /Mist Collector

## **BIN /CRATES CLEANING COMPARISON**



**BEFORE CLEANING**



**AFTER CLEANING**

## **ULTRAMAX HYDROJET PVT. LTD.**

AN ISO 9001:2015 COMPANY

AC-31/4A, 6th Main Road, SIDCO  
Industrial Estate, Thirumudivakkam,  
Chennai - 600 044, Tamil Nadu. India.

Phone : +91 44 4285 2262 / 2264

Mobile : +91 9080531215 / +91 8903335096

Email : [marketing@hydrojet.co.in](mailto:marketing@hydrojet.co.in)

Web : [www.hydrojet.co.in](http://www.hydrojet.co.in)

